

Project Name: My Learning Tube for HE in FE

Project Manager: Peter Kilcoyne, Director of ILT, Worcester College of Technology

Document Version:

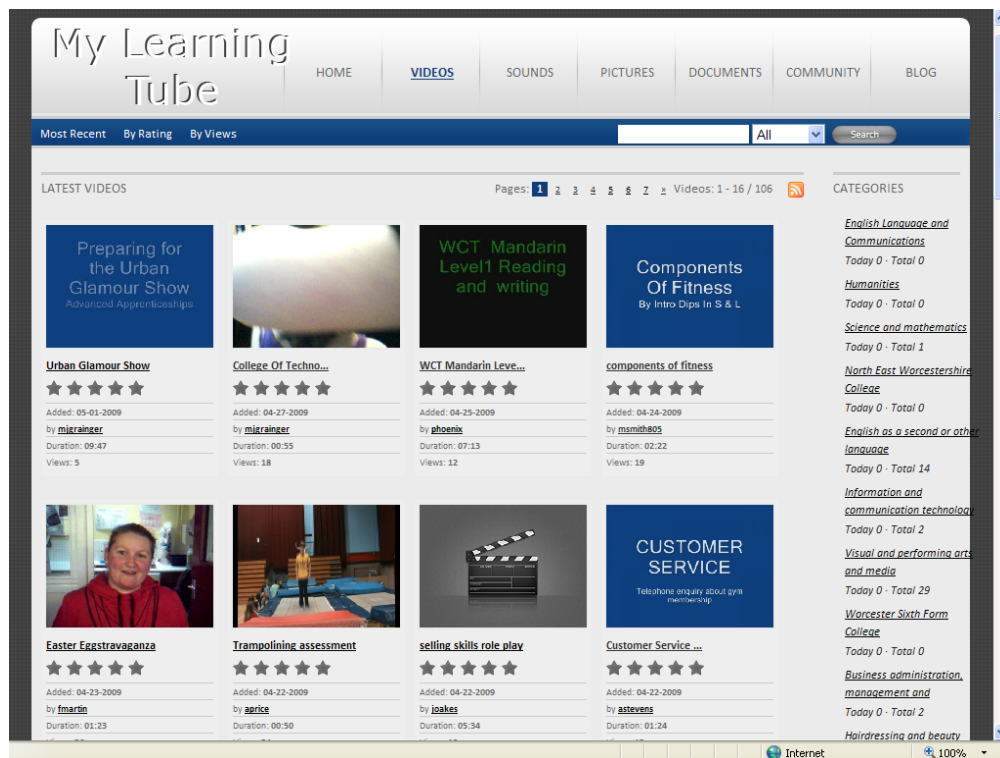
Document Distribution:

Name	Location	Responsibility	Action/Information
-------------	-----------------	-----------------------	---------------------------

1 Background

Worcester College of Technology is working with Kidderminster College, New College, Herford College of Arts, Herefordshire College of Technology and Evesham College to develop and make educational use of a Youtube like Video Platform www.mylearningtube.co.uk .

Figure 1. Screenshot of mylearningtube



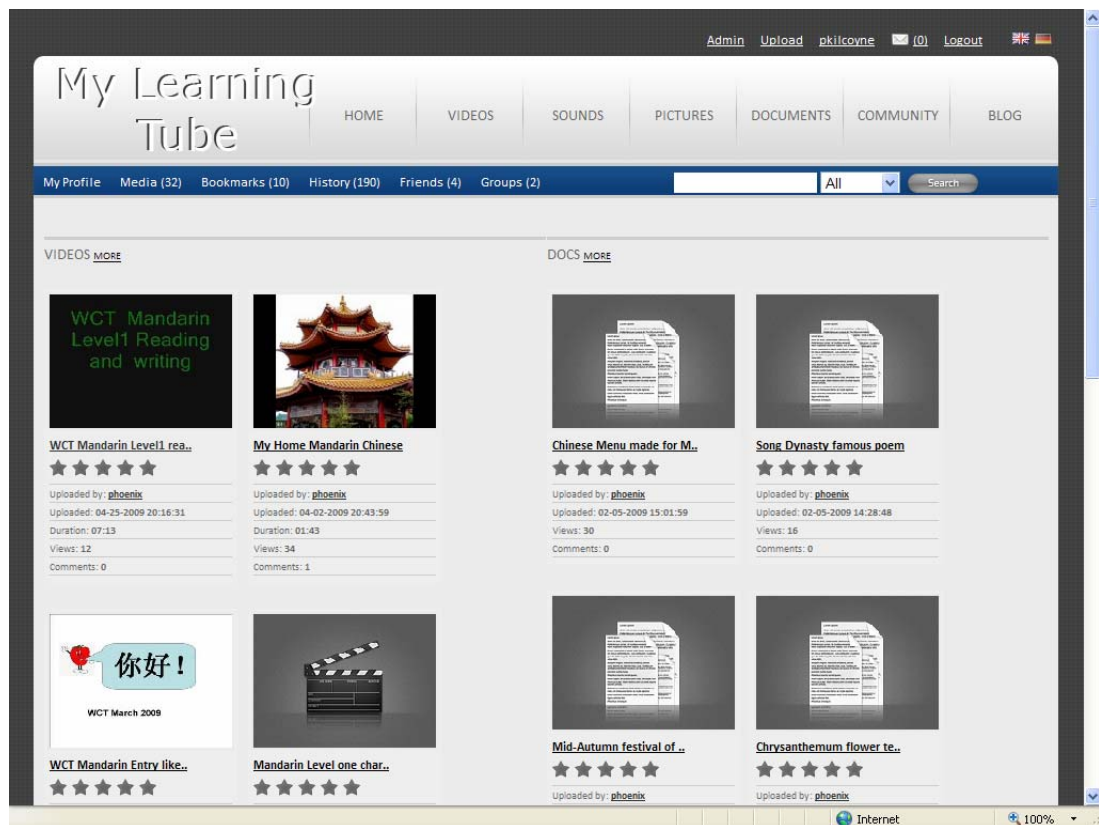
This platform uses the Open Source Software OStube and has very similar functionality to Youtube. All student and lecturers at the colleges involved can set up accounts which would allow them to upload videos to be shared with other users and comment on and discuss each other's videos. Videos are tagged with keywords and categorised to allow easy searching and browsing. Each user creates a profile and he or she has a home page where all uploaded content can be found. The site allows embedding into other web pages which means content uploaded to www.mylearningtube.co.uk can be directly streamed into other platforms such as the college VLE or student's e-portfolios.

This project can be seen as building on a number of recent historical trends in

developments of the internet, technology and education. This would include the massive recent growth of Video Platforms such as Youtube, Teacher Tube, Teachers TV and Video Jug for the dissemination of educational content and the growth of user-generated content being uploaded to the internet on sites such as Youtube, Flickr and Facebook.

From an educational point of view this project fits in well with the personalisation agenda and would provide content for student's e-portfolios. Students are able to create, store and share their own personalised content with tutors, other students as well as prospective employers and admissions officers at other educational institutions. Users can either link their mylearningtube content into their e-portfolios, upload it directly into the e-portfolio or use their "personal mylearningtube homepage" as a portfolio of their work.

Figure 2 showing a screenshot of an individual users uploaded video collection (and uploaded documents) on their mylearningtube homepage



There are also many possibilities for developing new methods for teaching and assessment. From a technical point of view, the availability of a stable reliable open source platform O.S Tube and of affordable good quality, easy to use camcorders such as the Disgo Plus (see below) makes this project something that has huge potential for growth in Further Education and Higher Education.



Figure 3. Disgo plus Camcorder

The mylearningtube website has been live for about 3 months to date but so far the main focus has been on vocational further education. This project aims to examine how the availability of cameras and the mylearningtube course platform would be used in Higher Education courses.

If successful the funding would be used to purchase disgo plus (or equivalent) camcorders for each learner and tutor on 4 HE in FE courses. The cameras cost approximately £80. It would also pay for a day a week for the duration of the project for the Director of ILT, an ILT Advisor and IT Technician to manage and support the project as well as providing training and evaluation.

In addition to this a capital bid is being made for the purchase of a “turnkey” video system to be installed into the college lecture theatre. This system allows “automated filming” including tracking of the tutor while they move around the front of the Theatre. The film of the tutor is integrated on screen with the output from the lecture theatre PC so that viewers of videos made by this system can simultaneously watch the tutor talking and see any PowerPoint presentation, webpage or video etc that is being shown on the screen in the lecture theatre. This system would allow lectures to be captured and uploaded to the mylearningtube platform for viewing after the lecture has taken place. It would also allow live streaming broadcast of lectures.

As mylearningtube is publicly visible on the Internet a number of safeguards have been set in place for FE users. These would be continued for HE users. These are

- All participants in videos must sign a consent form
- No content which infringers copyright or college acceptable usage policies must be uploaded
- Only users who are current tutors or students at the colleges using the platform are able to create accounts on www.mylearningtube.co.uk and upload content or add comment on other peoples videos
- All uploaded content has a “report” button next to it and can be easily removed if required by site admins.
- Where it is deemed inappropriate to upload content to a publicly visible site videos could be uploaded into “password protected” areas such as Moodle (VLE) or Mahara (e-portfolio)

It is important to note that all activity on the mylearningtube site is traceable to individual users providing they have not shared their logon details.

2 Objectives of the Project

1. To purchase and install a camera, microphones and lighting system in the

lecture hall for recording of lectures. The system identified, tracks the tutor if he or she moves around at the front of the class and allows split screen integration of the lecturer and any presentation on the screen behind him (or her).

2. To provide each lecturer and each student on four HE in FE Courses with one camcorder.

3. To develop and provide training on making the best use of the cameras and the mylearningplatform for tutors and learners.

4. To develop and evaluate a number of educational uses of the cameras and mylearningtube platform, such as delivering lectures, recording demonstrations by tutors, learners recording evidence of attainment, video blogs and student presentations

5. To develop and investigate the use of video content in e-portfolios.

6. To develop and investigate new methods of assessment using video evidence.

3 Project Approach

The primary aim of this project is to promote support and evaluate the use of the mylearningtube platform in conjunction with wide scale availability of camcorders by the higher education groups.

It is planned that the selected teaching groups will come from HE courses in IT , Sport, Public Services and Teacher Training. Around 80 digi pro camcorders will be purchased so that each tutor and student on these courses can borrow them for the duration of the project. Training will be provided for all tutors and learners involved in the project. This training will cover use of the cameras, the use of the mylearningtube site, simple editing techniques with Windows Movie Maker software (video editing software that is bundled as part of MS Windows XP and Vista) and discussions about the possible uses of the cameras on the particular courses involved.

Training for tutors involved will take place in the June – July 09 period prior to the roll out with students which will occur in September 09 –Jan 10 . Following this training each teaching team will, with support of the IT staff, prepare a plan covering a range of activities during the year in which the cameras will be used.

It is planned that a particular emphasise for tutors would be placed on using the cameras and the mylearningtube platform for creation of video teaching and learning resources. Tutors would be trained, encouraged and supported in the videoing of lectures, “mini-lectures” and in practical demonstrations. Teaching teams would also be encouraged and supported in developing innovative assessment opportunities involving the use of student generated video content.

Student use of camcorders and the mylearningtube platform would be developed in a number of different ways. These could include recoding evidence of attainment and skills development for use in e-portfolios and assessment. Reflective video blogging, video discussion forums and video presentations. It would be planned that the majority of these would be uploaded to the mylearningtube platform. However as this platform is publicly visible on

the Internet there may be some cases where videos would be uploaded to Moodle course sites where they would only be visible to other course members.

In 2008 the college re-developed its main lecture theatre to enable lecturers and students alike the ability to present work to others in a more professional manner using modern technologies, but with a base directive of access to the new equipment to be easy for all to use with no special training. Since this re-development there has been a dramatic increase in the use of the lecturer theatre.

We are now planning to produce a solution to record and stream live lectures from within the new lecture theatre. We would not only like to make this available internally, but also look at possibilities of streaming the lectures live offsite. This could greatly impact upon flexibility of learning for HE students who are in employment and may find regular attendance at college difficult. Our plan is to develop a system that -

- Is simple to use
- Give the presenters as much control as possible.
- Does not require any extra special equipment once installed

For simplicities sake we have chosen a 'turnkey' solution, the details of which can be found here <http://www.accordent.com/products/capture-station.aspx>

The project would be monitored by the project team on an ongoing basis through regular consultation with participants and through monitoring of activity on the mylearningtube platform. This would be complimented by a focus group being set up comprising of one tutor and two students from each course.

In addition to this, all participants will be issued with a questionnaire at the end of each Oct 09 and the end of the project.

On going support for the project be given by a dedicated member of the ILT team and IT team as well as the director of the ILT who will be acting as Project Manager. All findings and content as well as training recourses will be shared with other LLN partners involved in the mylearningtube project. The project would end with a 1 day conference from all LLN partner institutions would be invited.

4 Scope:

A Key Products from the project

- HE teaching resources on www.mylearningtube.co.uk
- User generated content by learners on www.mylearningtube.co.uk
- Evaluation of usefulness of mylearningtube for HE in FE learners
- Training materials for further use in WCT and for sharing with LLN Partners
- Evaluative report at the end of the project
- Dissemination event for LLN partners at the end of the project

B Out of Scope

- Use of mylearningtube and cameras on FE courses

5 Constraints

Constraints of the project could include reluctance on the part of some students who may not want to appear on video and of employers who do not want to have filming in the workplace. Some students may also struggle due to lack of access to computers at home or work .

There may in some cases be issues around uploading content to a publically viewable site such as mylearningtube. Where appropriate videos may also be loaded to the College Moodle site where they would only be available to those with access to the course area used.

6 Initial Project Case

Early indications from the use of mylearningtube and disgo cameras with vocational F.E. students has shown a great deal of enthusiasm for using the site and the camcorders.

The bid aims to build on this progress for higher education courses with particular emphasis on such applications as videoed lectures and tutor demonstrations, assessment, e-portfolios and reflective learning through video blogs. It is argued that this project is very timely at the moment in that it has only recently been possible to run such a project through the availability of open source Youtube like platforms such as OStube and the availability of cheap good quality easy to use digital camcorders.

The project also helps deliver on a number of educational drivers that all colleges are responding to at the present time such as personalisation, flexibility of delivery and the implementation of e-portfolios.

Personalisation

Technological solutions offer a range of ways of meeting with the Governments personalisation agenda. Provision of personal online learning spaces such as mylearningtube offers can be seen as meeting aspects of this. This could be through learners having a space to upload and share their own personally created content and the ability to personalise assessment procedures to meet a learners assessment preferences. For example choices in assessment requirement could be offered by tutors which could be met by learners in different ways such as written evidence, photographic evidence, evidence from observations of performance or video evidence. This type of personalisation of assessment would give learners the chance to be assessed in a medium that best fits their learning and assessment preferences.

Flexibility of Delivery

In order to bring more non-traditional learners into HE more flexible modes of delivery need to be developed. The videoing of lectures which could be accessed on an anytime/anyplace basis could greatly increase flexibility of learning. This would be particularly beneficial for students in employment or those with caring responsibility who may find it difficult to attend all lectures during a course.

e-portfolios

WCT is at present trialling the use of e-portfolios with the use of the LLN's Mahara platform. This project is seen as a powerful way to increase engagement with

teachers and learners with e-portfolios and a way of building video evidence at the heart of e-portfolio developments.

7 Benefits of the Project

Students

1. Increased availability of video resources which would help with the flexibility of learning and would appeal, in particular, to learners with visual and auditory learning preferences.
2. The capture of video evidence of skills development.
3. The creation of content for e-portfolios.
4. The ability to take part in intuitive and flexible assessment methods.
5. Enjoyable and creative activities.
6. Developing of new skills, for example, in video editing.

Tutors

1. Learning for to create learning resources.
2. Developing flexible modes of delivering and assessment.
3. Opportunities for creating and using video in innovative ways to support teaching and learning.
4. Developing a range of new skills in the use of videos.

The College

1. Benefit from available equipment and tutors with skills to use.
2. Move forward key strategic developments, e.g. e-portfolios flexible delivery, personalisation and e-learning.
3. The development and sharing of good practice across the institution.

LLN Partners

1. Benefit through sharing of resources, training materials and the development of best practice on the My Learning Tube Platform to which all have access.
2. Attendance at dissemination event at the end of the project.

8 Key Assumptions

- Video is an effective medium for enhancing learning
- Tutors and learners given appropriate tools and training will create and upload video content

- 1 **Costs** (This should include the commitment of the organisation to pay 20% of the costs)

Description of Costs	£
Revenue Costs: £15 000 from LLN £3000 from WCT	
80 Disgo plus (or equivalent) cameras x £80	6,400.00
Training and development time for 4 course teams (5hrsx20 tutorsx£25/hr)	2,500.00
ILT Support 0.1 x £25 000 for ILT Advisor	2,500.00
IT Support 0.1 x £27 000 for IT Technician	2,700.00
Project Management 0.1 x £39 000, Director of ILT	3,900.00
Sub-Total of Revenue Costs	18,000.00
Capital Costs:	
Accordent capture station, camera and hardware to enable integration	17,800.00
Sub-Total of Capital Costs	17,800.00
Total Cost	35,800.00

n.b. following checks with the LLN team it was confirmed that that disgo cameras would count as revenue expenditure.

On costs, accommodation, travel, phones and postage etc would all be covered by WCT in addition to the £3000 (20%) contribution outlined above.

The lecture theatre system would be a very useful innovation to the College and the project. However if the capital funding is not awarded the mylearningtube HE project would still be fully viable with the usage of the handheld disgo camcorders.

Staffing costs are based on one day per week over a six month period July 09- Jan 10. This would be 0.1 of a persons annual salary.

10 Project Timescale

July 09 – September 09

Purchase of Cameras

Purchase and instillation of turnkey video system in the lecture theatre

Training of staff in use of cameras, mylearningtube, movie maker and lecture video system

September 09 – Jan 10

Training of learners in using cameras, mylearningtube and movie maker

Use of cameras and mylearningtube by tutors and learners

Evaluation Questionnaires issued end of Oct 09 and Jan 10

Focus Groups to meet at same time periods

Dissemination Event at completion of project

11 How will the project be evaluated?

The project evaluation would be carried out by the ILT adviser and Director of ILT.

Questionnaires would be issued to all participants with separate ones for staff and students at the end of October 09 and at the end of the project in Jan 10. These questionnaires would cover issues such as the number of videos created, the types of videos created, people's attitudes to creating videos and how useful they felt the project was to teaching and learning. In addition to the questionnaire evidence, a focus group would be formed with one tutor and two students from each group involved. These groups would be facilitated by the Director of ILT and the main aim

of the focus group would be to identify and develop best practice and to examine any technical or educational problems following from the use of the mylearningtube platform and cameras.

12 How will the project be sustained?

Best practice models, will be identified through the evaluation process. Based on this, training for use of the wider college community will be developed. These training packages will be shared with other LLN partners. Cameras used in the project will be re issued to students in the years 2010 and 2011. It is also important to note however that many students will have easy access to their own video cameras, their digital cameras or their mobile phones; so those not issued with college cameras would still be able to create and upload contents to the mylearningtube platform. Those students who do not have access to their own cameras and who are not issued with a camera of their own will have access to a bank of cameras kept in the study centres.

13 Which aims, outcomes and/or targets will the project achieve for the HWLLN? Please also state which funding criteria this project meets and how.

This bid will help the LLN meet a number of its aims, outcomes, targets and funding criteria.

Aims

1. To increase the numbers of students entering higher education with vocational qualifications
2. To increase the number of part time students entering higher education whilst continuing employment
3. To help the target groups of students succeed in higher education
4. To facilitate a change in the design and delivery of curriculum in H & W to meet the needs of the target students

Outcomes

1. An increase in the number of courses delivered flexibly.
2. The provision for the region of more flexible and accessible range of courses and modules.
3. An increase in the number of Vocational Learners in Higher Education.
4. The creation and adaptation of innovative content for e-learning and blended learning. Embed this into course design.
5. The building of online content and communication.

The bid also meets with 2 of the 4 funding criteria outlined in the bidding documentation. These are –

- Does the project make courses more accessible to students in employment (this might be by, for example, ‘chunking up’ a course, introducing a revised pattern of delivery, introducing substantial e learning)?
This is achieved by creation of video lectures and other learning content that could lead to more flexible modes of delivery for learners in employment. e.g. students could watch live streamed lectures and or view lectures on mylearningtube at a time and place to suite themselves. The videos could also be used in conjunction with learning tools on Moodle such as discussion forums, wikis etc.

- Does the project enable joint working between two partner institutions?
As the mylearningtube platform is being used by six of the LLN partners exploring possible users for HE in FE courses could open up a range of collaborative opportunities.

14 Initial Risk Log

The following table summarises the risks that have been identified that may prevent the project being completed to the required quality, budget and timescale. The probability and impact of each risk has been graded as low, medium or high to indicate the relative importance attached to each element of risk.

Risks	Probability	Impact	Containment Plan
Key staff move on or suffer long term sickness	Low	Medium	Other staff are available in the college who could cover any of the key roles.
One or more of the identified courses does not run due to low recruitment	Low	Medium	Other course teams would be invited to participate
Misuse of mylearningtube platform	Low	Medium	Misuse is traceable to the user and appropriate action would be taken. E.g. removal of content, verbal or written warnings and possible loss of access to the site.

15 Project Team

Project Manager - Peter Kilcoyne, Director of ILT
 ILT Support – Helen Brady, ILT Advisor
 IT Support – Evan Whakahau, IT Technician